

Extra. Safe.



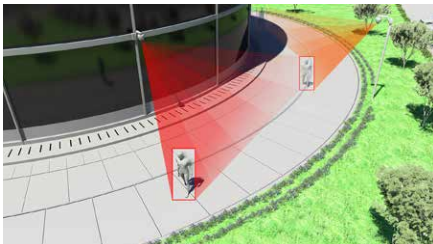
60  
YEARS



**IPS** Intelligent  
Video Software

Video Security means Intelligent  
Video Surveillance powered by  
the IPS factor.

**IPS VideoManager: Video Management  
and Video Analytics from a single source.**

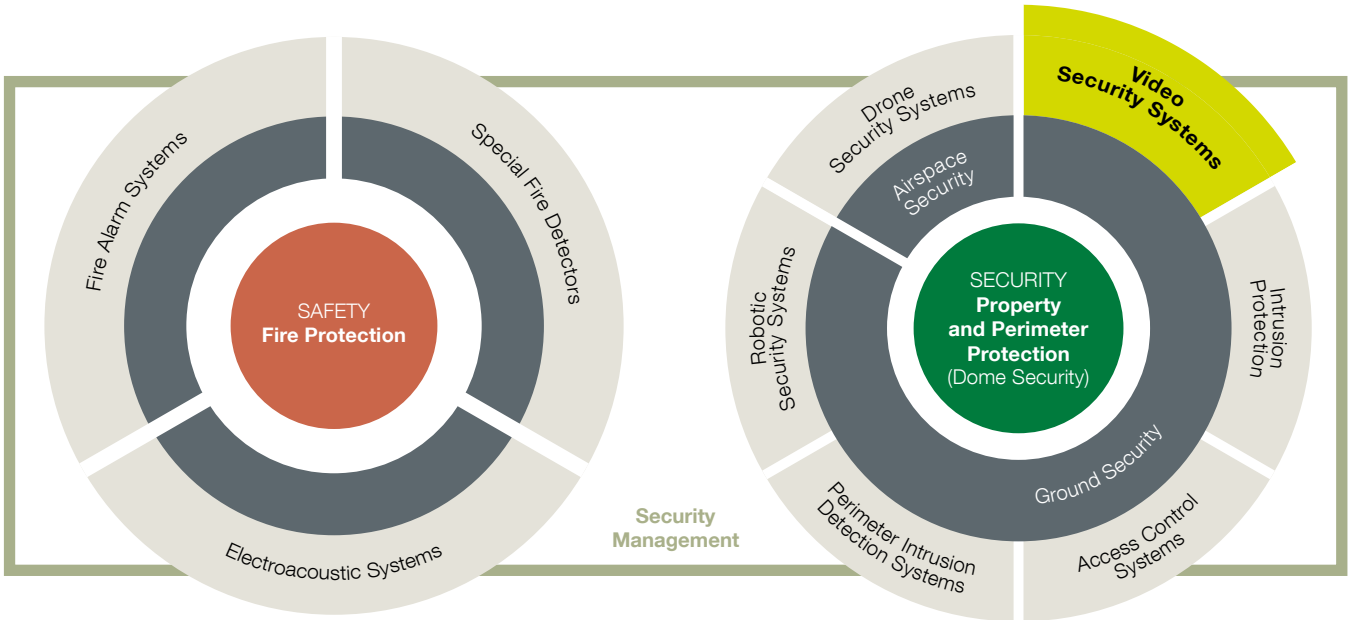


CONTENT

IPS VideoManager	04
Key Features	08
IPS NextGen Client	10
Scalability and References	12
IPS VideoAnalytics: The modules	16-31

Welcome to your brand for security:  
Securiton Germany

There can be no compromises when it comes to security. Concepts need to be approached holistically and developed on the basis of individual requirements. Securiton therefore sees itself as an integrator for you, providing reliable, high-tech solutions for security and safety from a single source and intermeshing them intelligently with one another. Here you can see which areas we can offer you specific solutions for:



Dome Security: our philosophy for property and perimeter protection

As a holistic partner for security, our mission is to hold a protective shield over our customers. On the basis of this philosophy – which we call “Dome Security” – we create reliable and custom solutions for all aspects of property and perimeter protection. Our intelligent video surveillance with IPS factor is indispensable for ground security in order to protect against a wide range of threat scenarios.

You can count on us for security:

- We have more than 45 years of experience as a systems provider and application specialist.
- We are one of the few providers who can develop, configure and implement end-to-end security concepts for you.
- We know exactly how to incorporate your specific needs and requirements into our solutions.
- We can guarantee professional advice when analysing your particular security situation in terms of dangers and risks.
- We can offer servicing and repairs from a single source.
- We operate from 16 locations across Germany – we are wherever you are.

IPS NextGen VideoAnalytics	IPS NextGen VideoAnalytics Licenses	IPS NextGen VideoAnalytics Loitering Detection	IPS NextGen VideoAnalytics Privacy Protection	IPS Outdoor Detection	IPS Privacy Protection	IPS Loitering Detection	IPS Dome Tracker
16	18	20	22				
IPS Sabotage Detection	IPS Indoor Detection	IPS Intrusion Detection	IPS Tamper Detection	IPS Motion Detection	IPS Critical Infrastructure Protection	IPS Public Transport Protection	IPS Left Luggage Detection
24	26	28	30				



# What is IPS Intelligent Video Software?

Securiton's technology brand „IPS Intelligent Video Software“ originated in 1965 as a German manufacturer of high-end video analytics and video management solutions with in-depth know-how in this field. Since then, a dedicated and creative team of developers based in Munich has continuously expanded the product portfolio and developed suitable solutions for video security. The IPS brand has been part of Securiton Germany since 2006. Due to their proven and outstanding reliability, products with the IPS label are used in thousands of installations in Europe. Both small companies and global players from various high-security sectors rely on IPS video analytics. For example, correctional facilities, critical infrastructures, oil refineries and control centres are among the long-standing clientele. In addition, there are close partnerships with system integrators and technology partners throughout Europe.



## IPS VideoManager

IPS VideoManager is an intelligent video management software for latest IP video surveillance systems. The software enables the reliable monitoring, control and management of all surveillance cameras, intuitive operation with a variety of user interfaces, and easy integration of third-party systems. The IPS VideoManager can be equipped with numerous native video analytics, which significantly increase the effectiveness of your video surveillance system. Due to flexible licensing, it is unlimited scalable and ideally suited for small and medium-sized systems as well as networked multi-site systems.

### Your benefits with our intelligent Video Management Software

- Unique IPS 3D Technology enables the automatic as well as manual (click in plan) control of PTZ cameras; Display of motion profiles and camera segments
- Integration of IPS video analytics for real-time detection of critical events or forensic analytics
- Open interfaces and support of standard protocols for easy integration of other systems, e.g. access control, license plate recognition etc.
- Flexible licensing and unlimited expansion options for optimal future security



Video Management and Video Analytics from a single source.



# Intelligent video surveillance with the IPS factor



## IPS VideoManager stands for security

IPS VideoManager forms the central element and significantly supports security personnel in monitoring access to company premises and indoor areas, in detecting theft, vandalism and stock shrinkage, serves to increase security in working environments and helps to optimise operational processes.

## Digital images provide an overview

Thanks to the user-friendly interface of IPS VideoManager, users benefit at all times from a clear display of what is happening - and focus their attention on the essentials. Despite complex functions, IPS VideoManager offers a modern operating concept for intuitive use.

## Targeted recording methods

Recordings secure important evidence to retrace the course of events and to convict perpetrators. IPS VideoManager records digital video images in high quality. Versatile configuration paths enable, for example, recording from the detection of an activity or from the triggering of an alarm.

### What is the IPS factor?

- Unique: video management and video analytics from a single source
- Inventive: 60 years of experience in the development of intelligent video analytics
- Predictive: Highly stable early warning systems with preventive hazard detection
- Reliable: System-based detection with real-time alarms
- Intelligent: User support through fully automatic object tracking
- Convincing: High-quality perimeter security, even with poor visibility
- Innovative: High-end video technology made in Germany



## Intelligent control for exact determination of position and motion

IPS VideoManager uses 3D technology to combine geo-coordinates with video images. This makes the space in the video calculable: positions in the video can be determined, people or events can be located.

Thanks to the intelligent control in conjunction with video analytics, IPS VideoManager can carry out an exact position determination and, as a result, visualize motion profiles in the site plan. This functionality makes it possible to generate motion profiles even across multiple cameras or across an entire property. This means that detection does not end at the camera's range of view, but rather at the boundary of the area to be protected.

## Intelligent video analytics – real-time alerts

The use of video analytics makes the video security system extremely efficient. With video analytics that can be integrated in a modular manner, dangers can be identified in a matter of seconds and appropriate intervention measures can be initiated.

The basic function of the analytics is motion detection: the system recognizes and distinguishes between objects (persons or animals) based on speed and size. As soon as certain limits or times are exceeded, i.e. undesirable events have occurred, the system automatically generates an alarm message.

# Video Management and Video Analytics from a Single Source



## Key Features

- Automated surveillance with innovative 3D video technology and integrated IPS VideoAnalytics support the security staff in stress situations
- H.264/H.265 precise playback with exact picture positioning and reverse single image enables an exact analysis of the footage. Thus actions that are finished within a split second can be detected
- Synchronous and asynchronous playback, as well as instant playback in every window facilitate the forensic analysis of the footage
- Extremely fast locating of relevant video material within large data sets by means of the function Smart Search (intelligent filtering of activity recordings)
- Tremendous reduction of bandwidth and storage needs due to activity controlled recording
- Effortless management of all security task with the support of high-end video analytics

## Intuitive Operation

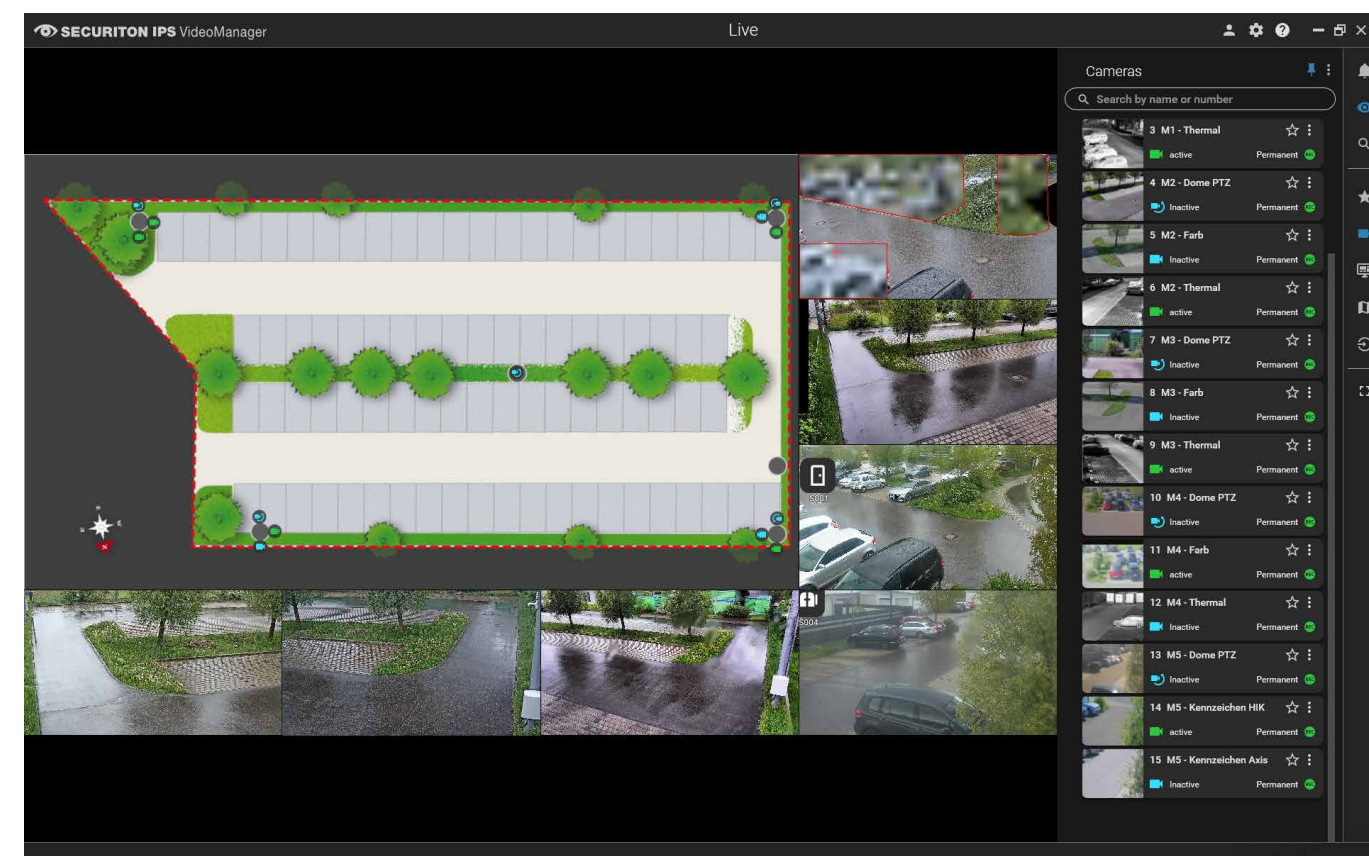
- Quick access to numerous functions: Thanks to the choice between live image, alarm image and playback, IPS VideoManager is easy to operate, both via the desktop interface and via MobileClient and WebClient
- Alarm processing similar to control centres and thus perfectly suitable for large systems with several users (For example, Accept alarm, forward, hold, prioritize, enter alarm reason etc.)
- Even when monitoring complex areas, ease of use is ensured by the IPS 3D Technology and elaborated features, such as control of dome cameras by clicking in the map and display of the camera's viewing angle
- Extension of touch operation for site plans

## Integration with third-party systems

- Very easy integration in third-party systems with transcoded H.264/H.265 stream with integrated overlay of the analytics objects and privacy mask
- IPS VideoManager provides extensive ANPR features. In addition to the native integration of Hikvision and Axis cameras with automatic number plate recognition (ANPR), the generic integration of other systems via SOAP and Host TCP interfaces is also supported
- IO devices can also be connected with HTTPS. Universal SOAP TCP and bidirectional host TCP interface for easy integration of third party systems, such as access control or integration of the IPS VideoManager in security management systems with remote control of VideoManager clients
- A variety of camera models from different manufacturers is integrated natively. Independent of manufacturer, all camera models can be integrated via ONVIF with events and multi-streaming concept.
- Display of analytics objects or objects delivered by a third system, i.e. drone security systems as vector or trace with specific avatar
- Support of ONVIF Profile T
- Interface for remote control of devices via HTTP

## System Security

- Latest encryption standard TLS 1.3 in use
- Encrypted communication on the SOAP TCP interface and SOAP Web Gateway interface
- Encrypted communication and streaming between cameras and Device Server
- Support of DNS and IPv6 (Communication to system components, Streaming between cameras and Device Server, Streaming between Device Server and Client)
- IPS VideoManager ensures the highest level of data security with numerous built-in security features, such as encrypted communication and multi-level user rights
- Seamless end-to-end encryption from the image source to the client
- Easy recovery of former versions through encrypted storage of the system configuration with rollback function
- IPS VideoManager meets the highest safety requirements with a special „High Security“ mode (forcing of complex passwords, marking of existing standard passwords after update, automatic configuration and activation of the Windows Firewall, etc.)
- Long-term reliable operation due to mechanisms for failover and redundancy
- The IPS TimeMachine enables a quick and targeted reconstruction of past events, including the operator reactions. This feature is especially suitable for training purposes and evaluation



## Access your IPS VideoManager from anywhere

- IPS MobileClient:** Mobile video surveillance on the move or at home – IPS MobileClient enables convenient operation of the IPS VideoManager from anywhere.
- IPS WebClient:** Intuitive video surveillance from any device – with IPS WebClient, IPS VideoManager can be controlled from any device. The web-based application supports all common web browsers and allows the use of the IPS VideoManager on a laptop, tablet or smartphone.



IPS NextGen Client



## IPS NextGen Client

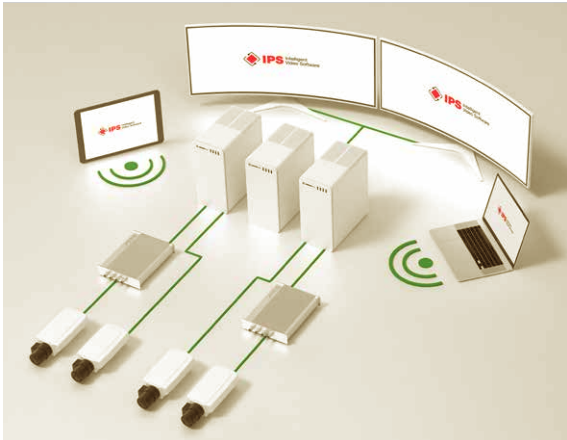
With the IPS VideoManager a new client is available that is even more user-friendly and intuitive to use. The new client is based on the graphic standard Google Material Design, which is widely used on the web. Developed according to the latest findings in technology, design and ergonomics, it impresses with its maximum clarity and intuitive user guidance.

- Resources (cameras, digital inputs, site plans) can be saved as favourites
- Camera groups are automatically displayed on the correct number of windows
- Display of the IPS NextGen Client in window or full screen mode
- Optionally compact (simple) or detailed display of the resource list
- Resource list can be arranged on the right or left
- Light and dark design switchable

### Highlight – Search page provides easy-to-use event search:

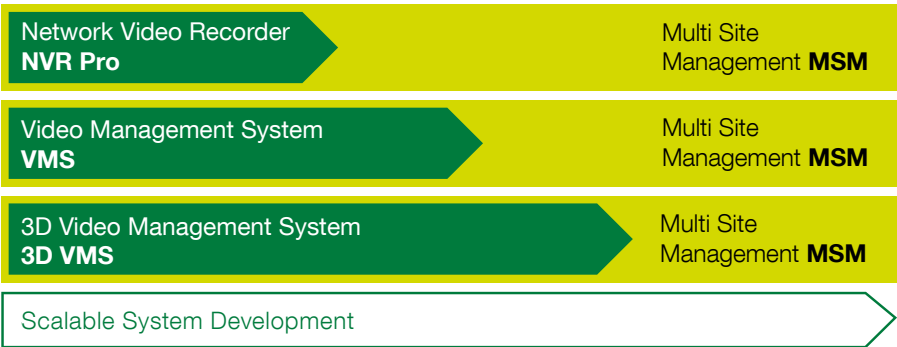
- The operator has three options for searching the recordings:
  - Directly in the camera list
  - Only display the alarms and refine the search by alarm type, object classification, alarm cause and alarm info
  - View all recordings ((duration, alarm, activity, manual)
- The period of the search can be set individually,
- Filter options in the resources and result lists are available according to camera number or camera name
- Sorting options in the result lists are chronological (ascending/descending)
- Easy export of multiple recordings (Archive file with password function)
- Export function processes possible blurring or masking for data protection compliance
- Preview pictures (alarm cards) also carry blurring or masking for data protection compliance

# Maximum flexibility with the IPS VideoManager



### Scalable Systems

The IP-based video management platform guarantees infinitely variable, unlimited system scaling. The IPS VideoManager ensures maximum flexibility and thus future security and investment protection.



### Functionalities




**Network Video Recorder (NVR Pro)**

Supports up to 32 cameras and clients and offers comprehensive video management functions (e.g. alarm handling and intelligent video analytics).



**Video Management System (VMS)**

IP-based platform for comprehensive, multi-server video security systems. Supports an unlimited number of cameras and clients.



**3D Video Management System (3D VMS)**

IP-based platform for geo-referenced, multi-server video security systems. Supports an unlimited number of cameras and clients.



**Multi Site Management (MSM)**

IP-based platform for the higher-level operation of individual video security systems. Supports the central administration, control and configuration of an unlimited number of properties.

### Always there for you: IPS VideoManager in use in emergency call and service control centers

Messages generated by IPS VideoManager can be transmitted to emergency call and service control centers thanks to Multi Site Management (MSM). Security personnel can review the video feed live and initiate appropriate interventions. This ensures that you and your surroundings are always optimally protected, even outside of your business hours.

# Applications

60 years of experience in the development of video surveillance solutions and by far more than 2,000 installations prove the highest quality of IPS video security products.

With decades of development experience, the portfolio today provides comprehensive solutions to challenging applications and meets the highest requirements. With their proven and outstanding reliability, the IPS video security products are deployed in thousands of applications throughout Europe. Ranging from small companies to global players, customers come from high security sectors such as prisons, critical infrastructure, petrochemical sites and remote surveillance centres.



Prisons in Europe



Industrial areas of any size



European train stations



Petrochemical plants in Spain



Distribution network operator in Germany



Emergency and service control centers



Offshore Platforms



Power Stations



Airports

Product details	
Languages	German, English, French, Italian, Spanish, Russian
Cameras	Vendor-independent Operation of several analytics modules per camera possible Suitable for colour and thermal cameras
System integration	In higher-level systems such as control systems, building management systems or PSIM
Interfaces	ONVIF, SOAP, Host TCP

Applications
Remote surveillance centres
Train stations
Data centres
Prisons
Industry
Authorities
Logistics
Energy
Wholesale and Retail
Public areas and buildings
Private properties



# IPS VideoAnalytics

## Intelligent Video Analytics for highest Security

IPS VideoAnalytics are intelligent video analytics modules operated on servers. The software informs in real-time about suspicious objects or events and supports the security staff in recognising potential threats before it is too late. A variety of intelligent video analytics functions are available to users to select the right analytics product for the individual application. IPS VideoAnalytics increase the effectiveness of a video security system: takes workload of the security personnel, relevant video material is quickly accessible and data volumes are reduced.

### Product details

Languages	German, English, French, Italian, Spanish, Russian
Cameras	Vendor-independent Operation of several analytics modules per camera possible Suitable for colour and thermal cameras*
Platform	IPS VideoManager

### Applications

Remote surveillance centres  
Train stations  
Data centres  
Prisons  
Industry  
Authorities  
Logistics  
Energy  
Wholesale and Retail  
Public areas and buildings  
Private properties

\* depending on analytics module

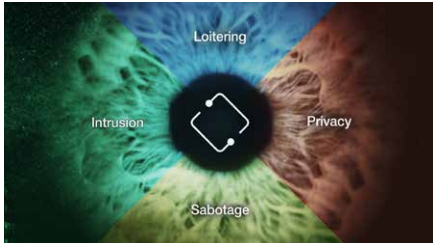


### Your Benefits

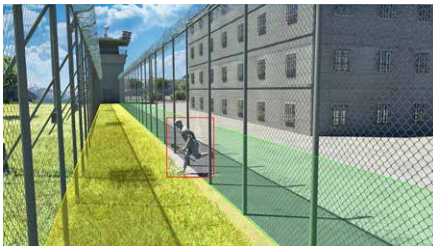
- Made in Germany – development in Germany since 60 years
- Open Platform – from simple alerting to integration
- Highly reliable detection and low false alarm rates due to machine learning technologies
- Intuitive user interface for easy configuration and operation

# IPS VideoAnalytics overview

Securiton's Technology Brand IPS offers video analytics for a variety of applications. Modular video analytics functions integrated into the IPS VideoManager ensure greater security and reliable detection.



**IPS NextGen VideoAnalytics**  
Various video analytics combined in one software module



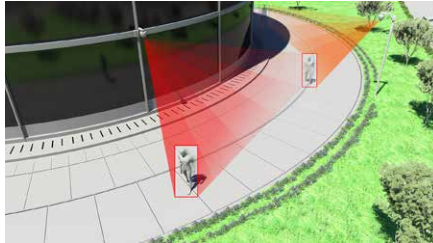
**IPS Outdoor Detection**  
For perimeter protection in high security applications



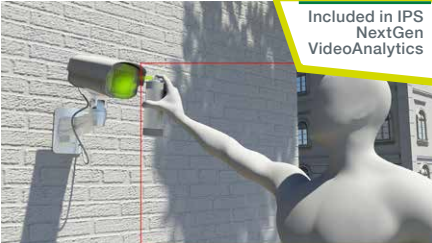
**IPS Privacy Protection**  
For privacy protection in monitored areas



**IPS Loitering Detection**  
For the detection of loitering in a predefined area



**IPS Dome Tracker**  
Automatics detection and tracking of moving objects



**IPS Sabotage Detection**  
Reliably detects manipulations on cameras



**IPS Indoor Detection**  
Alerts in real time when people (or vehicles) enter a secured area



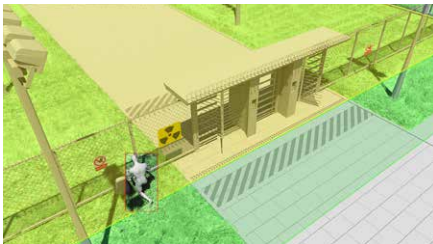
**IPS Intrusion Detection**  
For perimeter protection of outdoor areas



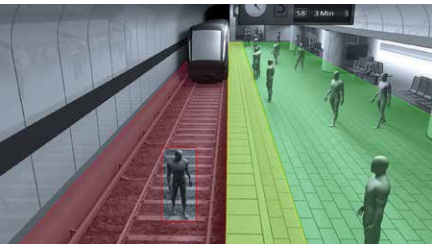
**IPS Tamper Detection**  
Alerts in case of camera tampering attempts



**IPS Motion Detection**  
For activity detection in pre-defined areas



**IPS Critical Infrastruct. Protection**  
For the protection of critical infrastructures

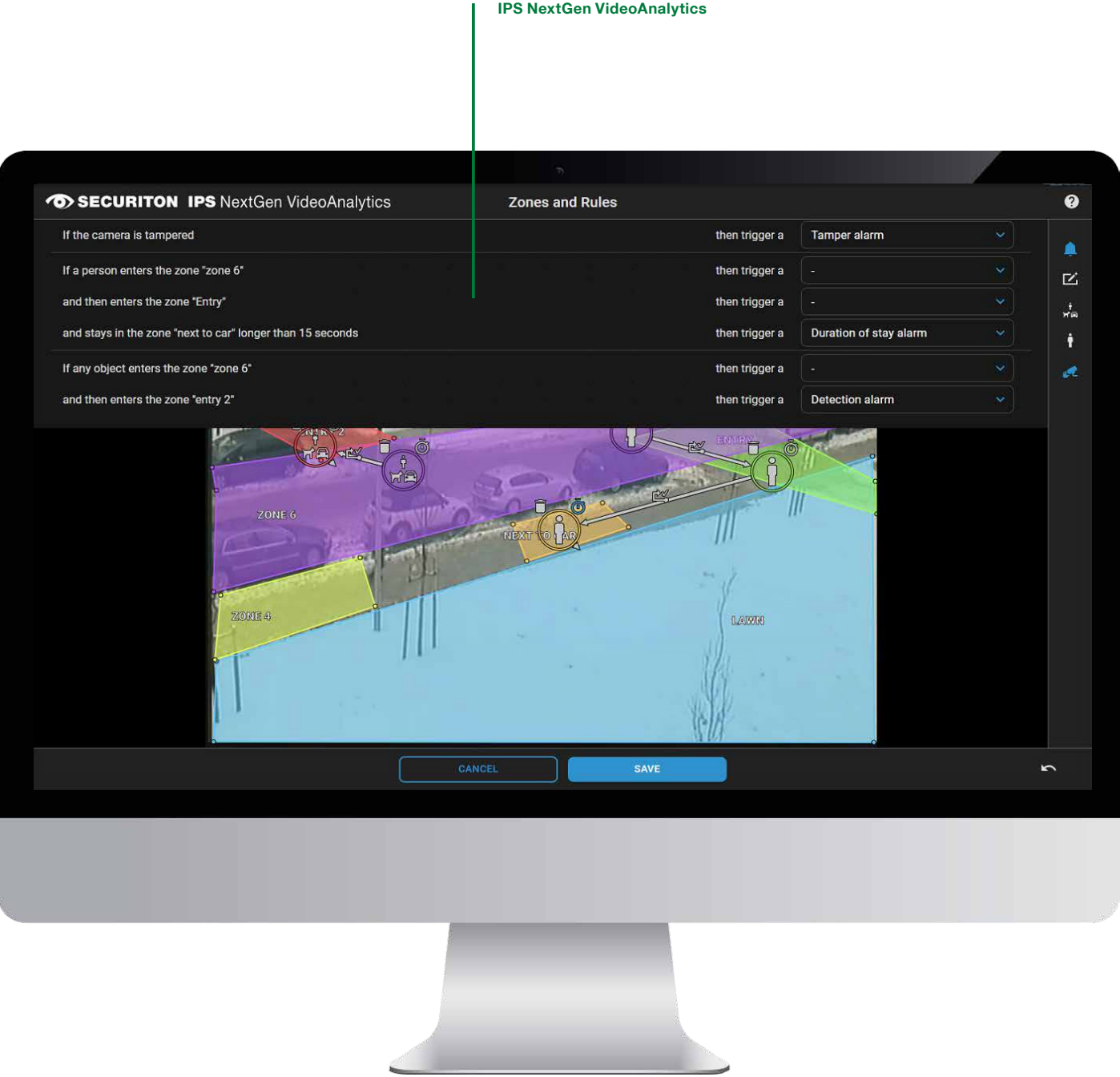


**IPS Public Transport Protection**  
For the monitoring of track beds and platforms



**IPS Left Luggage Detection**  
For the detection of suspicious luggage





- Your benefits**
- Intuitive graphical configuration
  - Several rules possible in one configuration
  - Several rules can be linked
  - Seamless integration in IPS VideoManager
  - Reduced bandwidth and storage requirements
  - Fast recording search
  - Optimal cost / benefit ratio through integration of several analyzes and scenarios in one module

**Applications**

Server-based video analytics for indoor and outdoor applications  
Perimeter, site and open area monitoring  
Suitable for thermal cameras  
Automatic recording control

# IPS NextGen VideoAnalytics

As a pioneer in video analytics, IPS is taking the next step towards the future of intelligent video analytics. The IPS NextGen VideoAnalytics combine several intelligent video analytics in one module, where previously several individual modules were necessary. The redesigned, clear interface was developed according to the latest findings in technology, design and ergonomics and is based on the Google Material Design graphic standard.

The new operating concept ensures increased user friendliness. By generating individual graphical rules, many application scenarios can be covered, which means that the user is very free to choose the application. Several applications are even possible for one camera channel. All analytics modules alert you in real time as soon as a dangerous situation occurs.

**Key features**

- Automatic generation of alarm rules through flexible graphical configuration of zones and objects
- Several independent rules are possible in one configuration
- Several rules can be linked
- Alerts in the event of intrusion or zone crossing
- Real-time alerting based on the defined rules
- Forensic search in a definable image section
- Trained AI support the detection of disturbing objects and persons
- Motion and activity detection
- Detection of manipulations on the camera (blinding, covering, redirecting)
- Masking and blurring of objects and zones to protect privacy
- Detection of people loitering
- Consideration of object sizes and perspectives
- Available in two versions that build on one another: Standard, Professional

**IPS NexGen VideoAnalytics Licences**

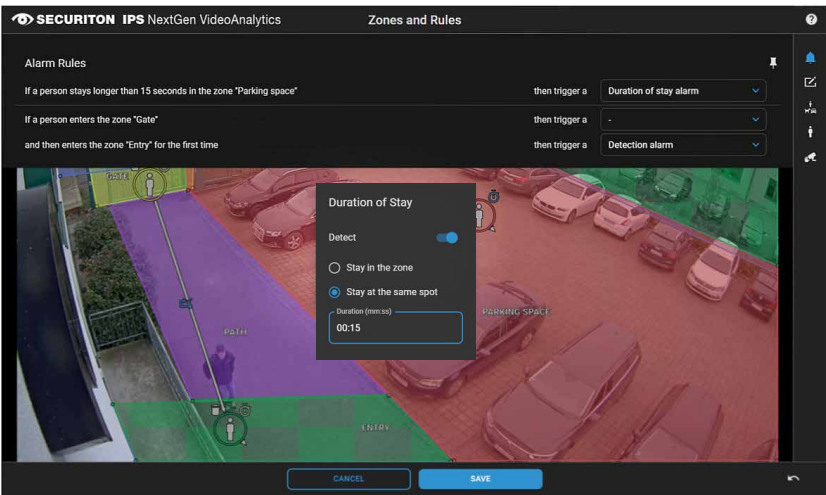
Functions	Standard	Professional
<b>Basic funtionality</b>		
Number of zones	unlimited	unlimited
Number of rules (incl. tampering detection)	2	5
Number of links within one rule	0	2
Motion detection	✓	✓
Alarm in the event of tampering (Blinding, covering, redirecting)	✓	✓
Alarm in the event of zone intrusion	✓	✓
Alarm in the event of moving from zone to zone		✓
Privacy Protection: Masking and blurring of zones (irreversible)	✓	✓
Privacy Protection: Masking and blurring of objects and zones (reversible/irreversible)		✓
<b>Alarm as per object</b>		
General objects	✓	✓
Persons (fully visible, upright)		✓
<b>Alarm as per behaviour</b>		
Loitering alarm when staying in one zone		✓
Loitering alarm when staying at the same spot		✓
<b>Camera/Sensor Support</b>		
Analytics for RGB cameras	✓	✓
<b>Upgrade Licences (available for cameras with IPS NextGen VideoAnalytics as package)</b>		
Upgrade Standard > Professional	✓	



# IPS NextGen VideoAnalytics

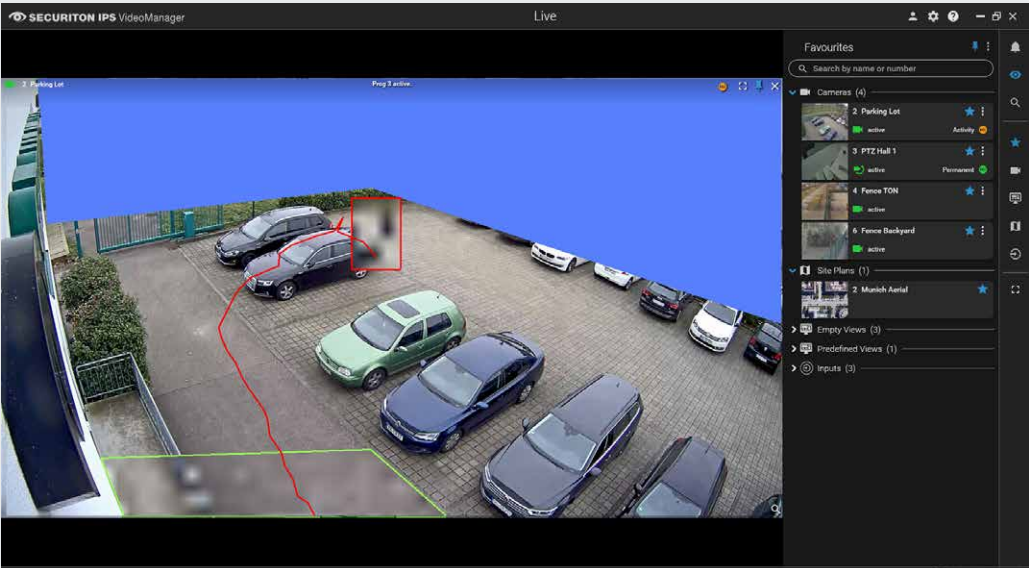
## Loitering Detection

Integrated into IPS NextGen VideoAnalytics, this function ensures that loitering persons are detected in time and an alarm is triggered.



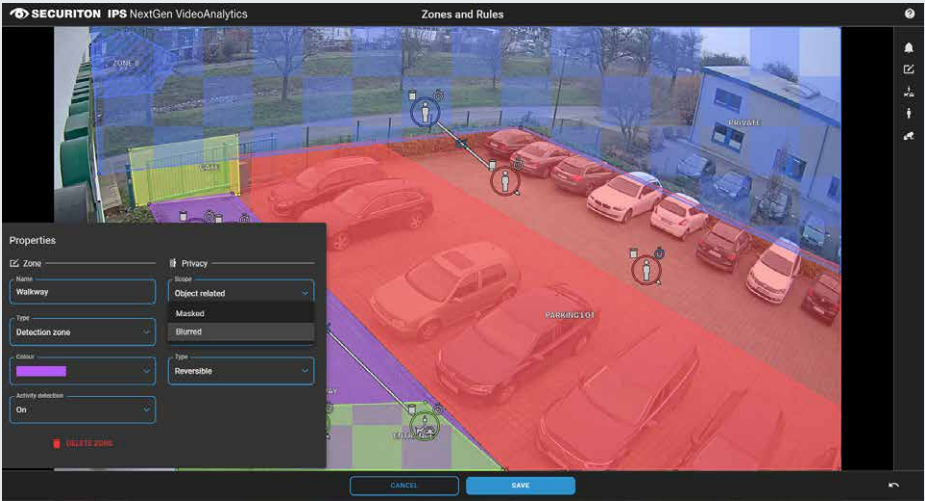
**The Loitering Detection function offers the following:**

- The time a person is allowed to stay in a predefined zone until an alarm is triggered can be set variably by means of a pop-up window
- Duration of stay is freely selectable (for stay in a zone or stay in one place)
- Alarm rules can be set individually – for example, a detection alarm can be set as a rule in the event of unauthorised entry, or a duration of stay alarm can be set in the event of the detection of loitering persons



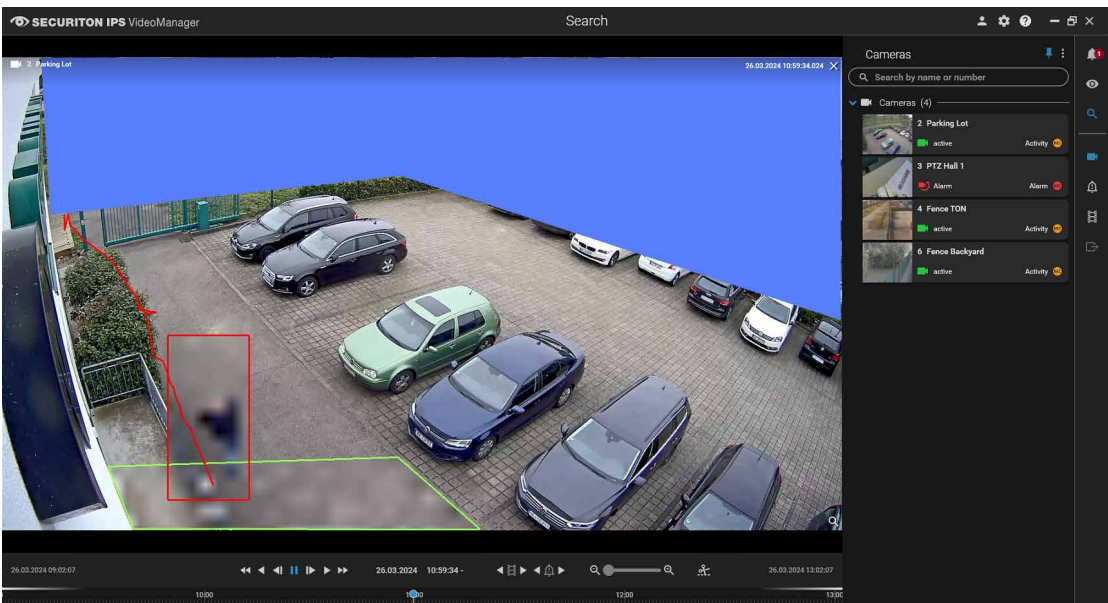
## Privacy Protection

IPS NextGen VideoAnalytics integrates this function to ensure that privacy is protected and data protection regulations are complied with. The set-up is done via the properties window, either you select object related or zone related



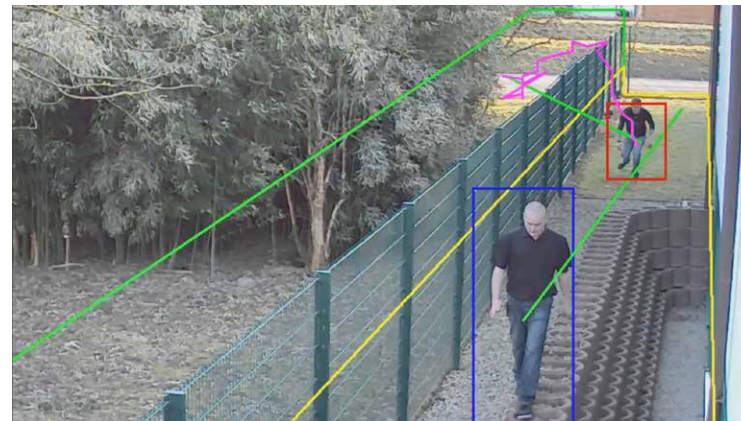
**The Privacy Protection function offers the following:**

- The Standard licence has a static masking or blurring of zones that is irreversible
- The Professional licence includes the static masking or blurring of zones and the masking or blurring of objects and persons. These are both reversible and irreversible





# IPS Outdoor Detection



## Intelligent video analytics for highest security

The CPNI-certified IPS Outdoor Detection video analytics alerts in real time when people or vehicles enter a secured outside area. With its already in 1995 patented zone concept, it allows an exact friend or foe recognition. Additionally, it can be perfectly adjusted to its environment thanks to special filters (i.e. flight of birds, shadows, clouds). This facilitates a reliable detection of unauthorised accesses even under difficult lighting and weather conditions. Installation and configuration is straightforward and it is developed for outdoor applications.

### Key features

- Real time alerting in case of intrusion in secured areas
- Activity recognition, recognition of camera sabotage, objects are recognised and will be tracked
- Video analytics based on machine learning technology guarantees a low false alarm rate
- Configuration of capture, alarm and priority zone with the IPS zone concept
- Setting of object sizes, object directions, object distances, object speed, perspectives and application variants
- 3D georeferencing and simultaneous object confirmation possible (IPS VideoManager)
- Suitable for colour and thermal cameras



### Your Benefits

- Reliable perimeter protection in all weathers, suitable for high security applications
- Recording search of relevant video footage within seconds
- Activity-controlled recording and searching reduces bandwidth and storage requirements
- Cost advantage due to early detection of suspicious behaviour and subsequently avoiding disturbances

# IPS Privacy Protection



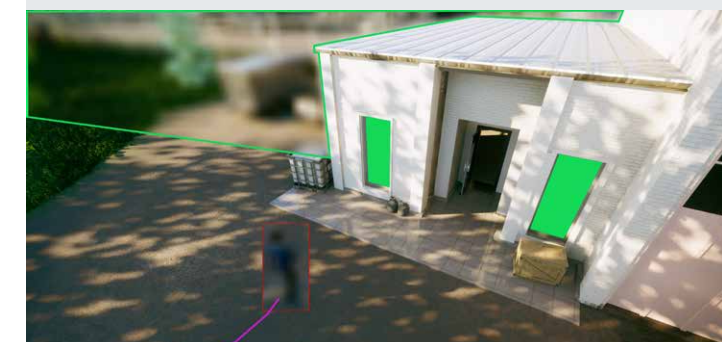
IPS Privacy Protection is an intelligent video analytics module for real-time privacy protection in monitored areas. By using the masking or blurring function, fix areas and mobile objects become unrecognisable. This ensures the compliance with legal frameworks regarding the monitoring of public areas. Installation and configuration is straightforward and it is suitable for indoor and outdoor applications.

### Key features

- Real-time protection of privacy in a monitored area
- Masking or blurring of buildings, areas, vehicles or persons (fix areas, mobile objects and activity recognition)
- Video image analysis based on machine learning technology
- Configuration of areas and object masking zones
- Setting of object sizes, perspectives and application variants
- Fulfills the highest data protection requirements through irreversible masking (IPS VideoManager)
- Suitable for colour and thermal cameras

### Your benefits

- Reliable privacy protection
- Intuitive installation and configuration
- Facilitates video surveillance of public areas in compliance with legal frameworks



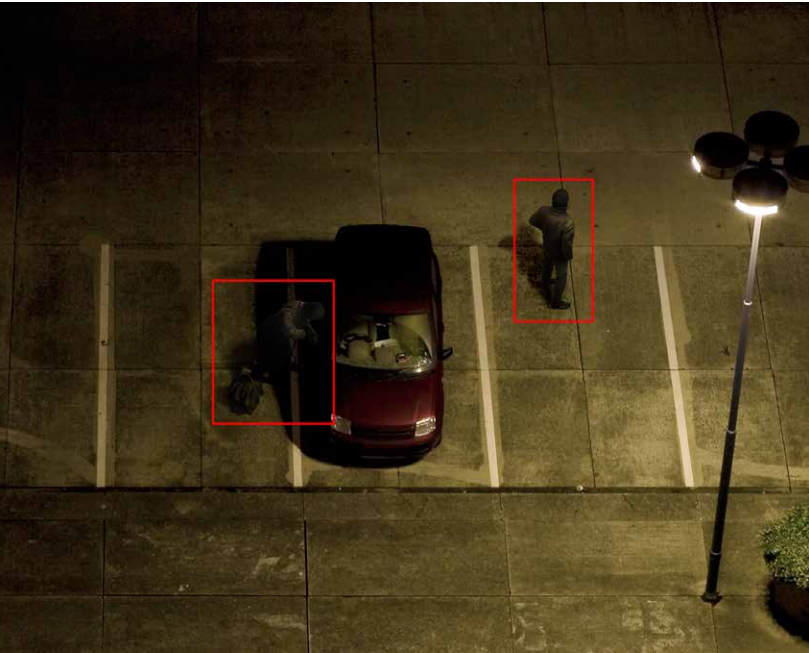


# IPS Loitering Detection

The intelligent video analytics module IPS Loitering Detection alerts in real time when people dwell in a predefined area for an unusually long time. In the event of suspicion, quick action can be taken to prevent undesirable events such as vandalism. With its zone concept, it allows an exact recognition of suspicious movements. In addition, it can be perfectly adjusted to its environment. This analytics module is suitable for indoor and outdoor applications and provides reliable detection of unauthorised loitering even under difficult weather conditions.

**Key features**

- Real time alerting in case of people loitering in monitored area
- Recognition of loitering and slow movements as well as activity recognition
- Video analytics based on machine learning technology guarantees low false alarm rate
- Configuration of capture, alarm and priority zone
- Setting of object sizes, object directions, object distances, object dwelling time (up to 30 minutes), perspectives and application variants
- 3D georeferencing and simultaneous object confirmation possible (IPS VideoManager)
- Object classification and filtering (IPS VideoManager)
- Suitable for colour and thermal cameras



**Your benefits**

- Reliable loitering detection and low false alarm rate under difficult weather conditions
- Activity-controlled recording and searching reduces bandwidth and storage requirements
- Intuitive installation and configuration
- Risk mitigation due to early detection of suspicious behaviour and subsequently avoiding disturbances

# IPS Dome Tracker



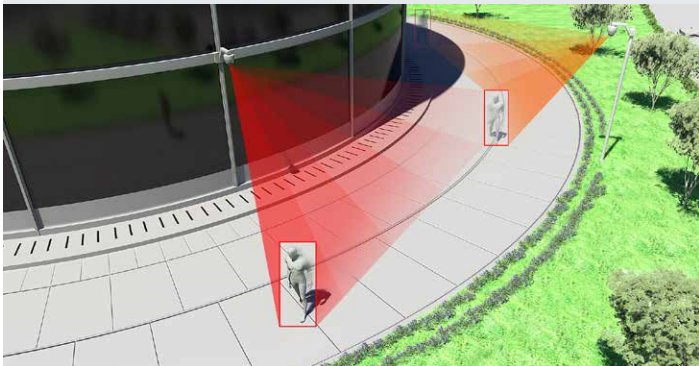
IPS Dome Tracker is an intelligent video analytics module for real-time control of PTZ cameras. It automatically detects and tracks moving objects within the surveillance area. Using 3D geo-referencing data, it supports the intuitive PTZ control with mouse click in camera images (fix/PTZ) or site plans and allows the automatic tracking of alarm objects between various surveillance cameras (fix/PTZ). This facilitates the simplified operation of PTZ cameras even within complex surveillance areas. Installation and configuration is straightforward and it is suitable for indoor and outdoor applications.

**Key features**

- Real-time control of PTZ cameras
- Automatic object recognition and tracking with PTZ cameras
- Trained machine learning technologies to suppress disturbance
- Control of PTZ cameras over mouse click in the image of PTZ cameras
- Control of PTZ cameras over mouse click in the image of fix cameras (with 3D VMS)
- Control of PTZ cameras over mouse click in the site plan (with 3D VMS)
- Alarm object tracking from fix camera to PTZ camera (with 3D VMS)
- Alarm object tracking from PTZ camera to PTZ camera (with 3D VMS)
- Object tracking underneath the camera
- Suitable for selected PTZ cameras

**Your benefits**

- Simplifies control of PTZ cameras
- Supports the security staff
- Complete automatic object tracking even in complex surveillance areas
- Intuitive installation and configuration





## IPS Sabotage Detection

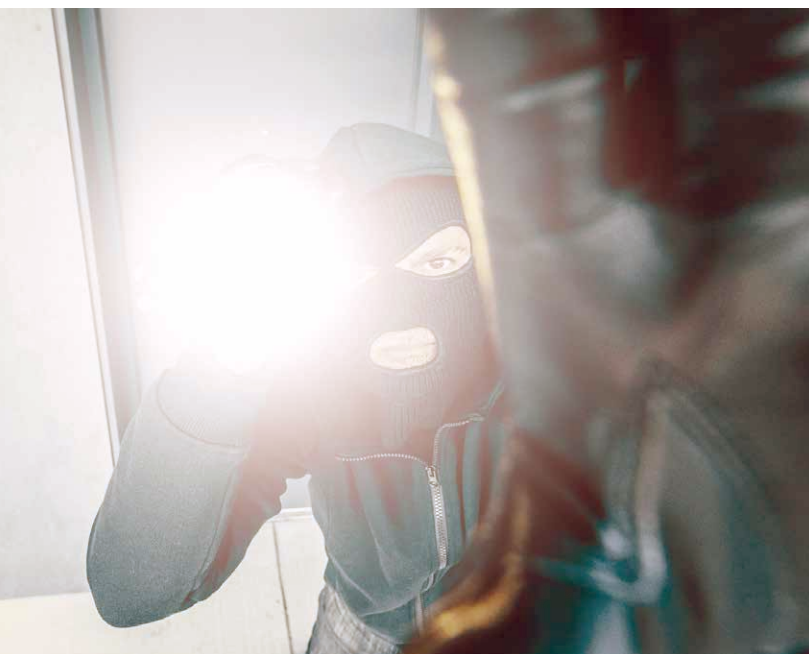


### Intelligent video analytics for highest security

IPS Sabotage Detection is an intelligent video analytics module for real-time alerting in case of camera tampering attempts (covering, redirecting, spraying, blinding). It recognises forms and positions of contours and allows the exact identification of deviations. This facilitates the immediate detection of tampering attempts, which substantially improves the reliability of video security systems. Installation and configuration is straightforward and it is suitable for indoor and outdoor applications.

#### Key features

- Real-time alerting in case of camera tampering attempt
- Sabotage recognition of covering, redirecting, spraying and blinding of cameras
- Video analytics based on machine learning technologies guarantees low false alarm rate
- Configuration of alarm zone
- Adjustment of application variants
- Suitable for colour and thermal cameras



#### Your benefits

- Enhanced reliability of video security systems
- Intuitive installation and configuration
- Recording search of relevant video footage within seconds
- Immediate and reliable detection of tampering attempts

Included in a camera input channel!

## IPS Indoor Detection



The intelligent video analytics module IPS Indoor Detection alerts in real time when people (or vehicles) enter a secured area. It recognises the object size, determines the object movement and differentiates the perspectives. This facilitates the reliable detection of unauthorised accesses even under difficult lighting conditions. Installation and configuration of this analytics module is easy. It is especially suitable for indoor applications.

#### Key features

- Real time alerting in case of intrusion in a secured area
- Activity and objects are recognised and will be tracked
- Video analytics based on machine learning technology guarantees a low false alarm rate
- Configuration of capture and alarm zone
- Setting of object sizes, object directions, perspectives and application variant
- 3D georeferencing and simultaneous object confirmation possible (IPS VideoManager)
- Suitable for colour and thermal cameras

#### Your benefits

- Reliable indoor protection, also suitable for high-security applications
- Activity-controlled recording and searching reduces bandwidth and storage requirements
- Reliable detection in difficult lighting conditions
- Cost advantage due to early detection of suspicious behaviour and subsequently avoiding disturbances





## IPS Intrusion Detection

The intelligent video analytics module IPS Intrusion Detection alerts in real time when people or vehicles enter a secured outside area. With its zone concept, it allows an exact friend or foe recognition. In addition, it can be perfectly adjusted to its environment thanks to special filters. This facilitates a reliable detection of unauthorised access even under difficult weather conditions. Installation and configuration of this analytics module is easy. It is suitable for outdoor applications.

### Key features

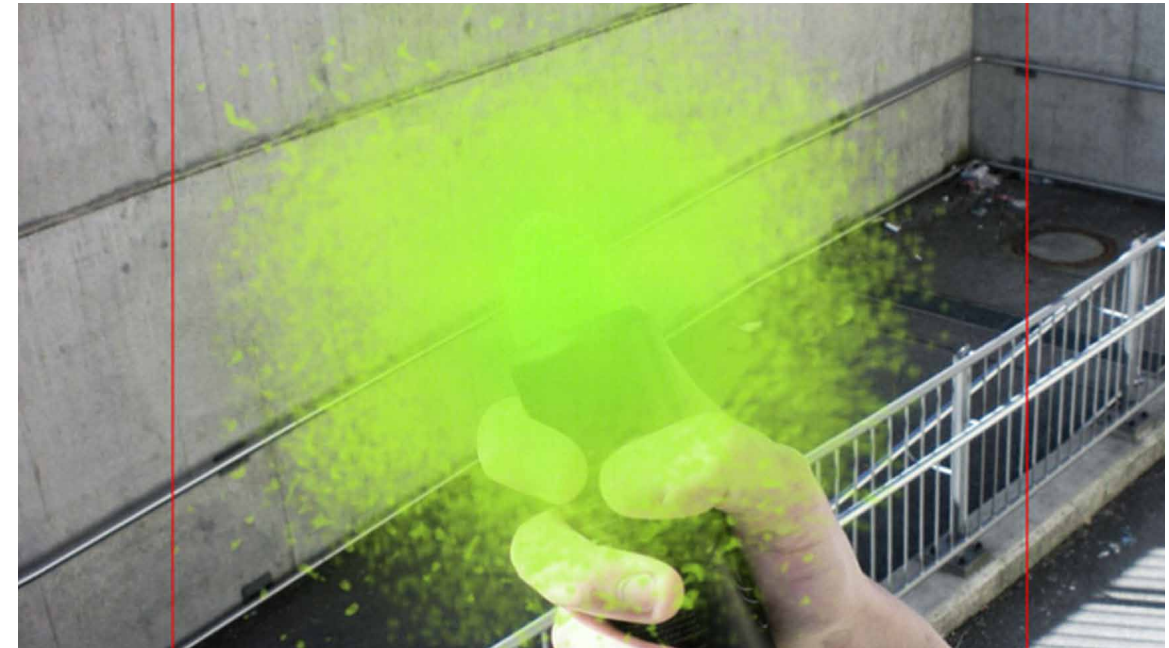
- Real time alerting in case of intrusion in a secured area
- Activity recognition, recognition of camera sabotage, objects are recognised and will be tracked
- Video analytics based on machine learning technology guarantees a low false alarm rate
- Configuration of capture and alarm zone
- Setting of object sizes, object directions, perspectives and application variant
- 3D georeferencing possible (IPS VideoManager)
- Suitable for colour and thermal cameras



### Your benefits

- Reliable perimeter protection, suitable for high security applications
- Activity-controlled recording and searching reduces bandwidth and storage requirements
- Recording search of relevant video footage within seconds
- Damage limitation due to early detection of suspicious behaviour and subsequently avoiding disturbances

## IPS Tamper Detection



IPS Tamper Detection is an intelligent video analytics module for real-time alerting in case of camera tampering attempts (defocusing, misting, concealing, covering, redirecting, spraying, blinding), among others in critical infrastructures. With permanent scene analysis, it constantly verifies the state of the camera and allows the immediate identification of smallest deviations. This facilitates the fast and precise detection of finest disturbances and tampering attempts, which substantially improves the detection safety in the monitored area. Installation and configuration is straightforward and it is suitable for indoor and outdoor applications.

### Key features

- Real-time alerting in case of camera tampering attempts
- Tamper recognition of cameras (defocusing, misting, concealing, covering, redirecting, spraying and blinding)
- Video analytics based on machine learning technology guarantees a low false alarm rate
- Configuration of alarm zone
- Adjustment of application variants
- Suitable for colour and thermal cameras

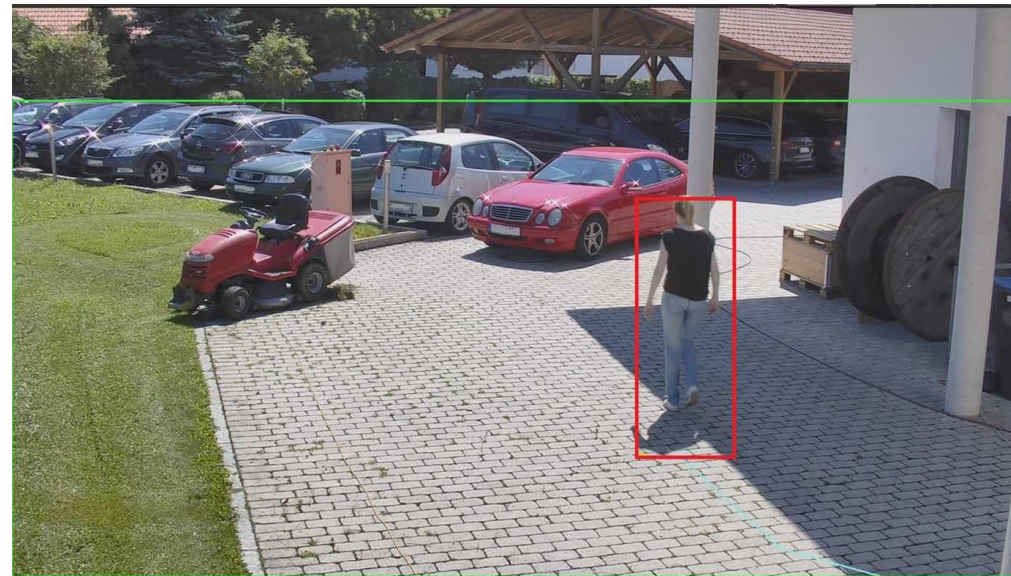
### Your benefits

- Protection of the operational availability of video security systems in critical infrastructures
- Immediate and reliable detection of manipulation attempts
- Enables immediate intervention in the event of camera manipulation
- Intuitive installation and configuration





## IPS Motion Detection



The intelligent video analytics module IPS Motion Detection alerts in real time when motion is detected within predefined areas. It recognizes the object size, determines the object movement and differentiates the perspectives. Also, it enables event-driven recording that significantly reduces the bandwidth and storage requirements of video security systems. Installation and configuration of this analytics module is easy. It is suitable for indoor and outdoor applications.

### Key features

- Real time alerting when objects move around in predefined area
- Motion and activity recognition
- Video analytics based on machine learning technology guarantees low false alarm rate
- Configuration of capture and alarm zone
- Setting of object sizes and perspectives
- Setting of object directions, object distances and application variants (IPS VideoManager)
- 3D georeferencing possible (IPS VideoManager)
- Suitable for colour and thermal cameras



### Your benefits

- Higher effectiveness of video security systems
- Activity-controlled recording and searching reduces bandwidth and storage requirements
- Recording search of relevant video footage within seconds
- Damage minimization through early detection of suspicious behaviour and thus avoidance of incidents

Included in a camera input channel!

## IPS Critical Infrastructure Protection



IPS Critical Infrastructure Protection is an intelligent video analytics module for the real-time alerting in case of intrusion into secured outdoor areas of especially sensitive installations. With its IPS zone concept already patented in 1995, it recognises suspicious behaviour and allows an exact friend or foe recognition. Additionally, it detects camera tampering attempts and can be perfectly adjusted to its environment thanks to special filters (i.e. flight of birds, shadows, clouds). This facilitates a precise and reliable detection of attacks against critical infrastructures even under difficult weather conditions. Installation and configuration is straightforward and it is suitable for outdoor applications.

### Key features

- Real-time alerting in case of attacks against critical infrastructures
- Tamper recognition of cameras (defocusing, misting, concealing, covering, redirecting, spraying and blinding)
- Recognition of loitering and slow movements
- Activity recognition, objects are recognised and will be tracked
- Video analytics based on machine learning technology guarantees a low false alarm rate
- Configuration of capture, alarm and priority zone with the IPS 3-zone concept
- Setting of object sizes, object directions, object distances, object speed, object dwelling time, perspectives and application variants
- 3D georeferencing and simultaneous object confirmation possible
- Suitable for colour and thermal cameras

### Your benefits

- Reliable perimeter protection of critical infrastructures even under difficult weather conditions
- Damage minimization through early detection of suspicious behaviour and thus avoidance of incidents
- Combines the functionalities of the analytics IPS Tamper Detection, IPS Loitering Detection and IPS Outdoor Detection
- Recording search of relevant video footage within seconds



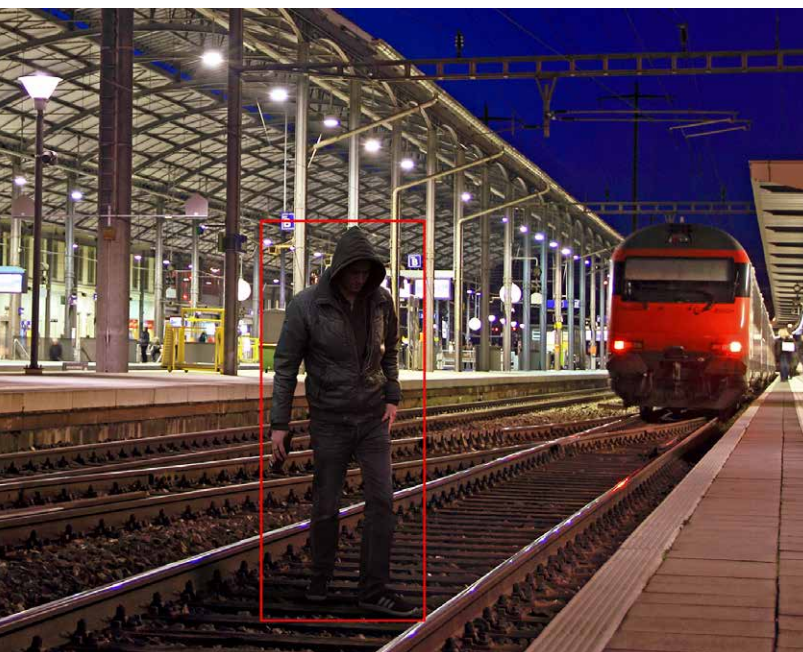
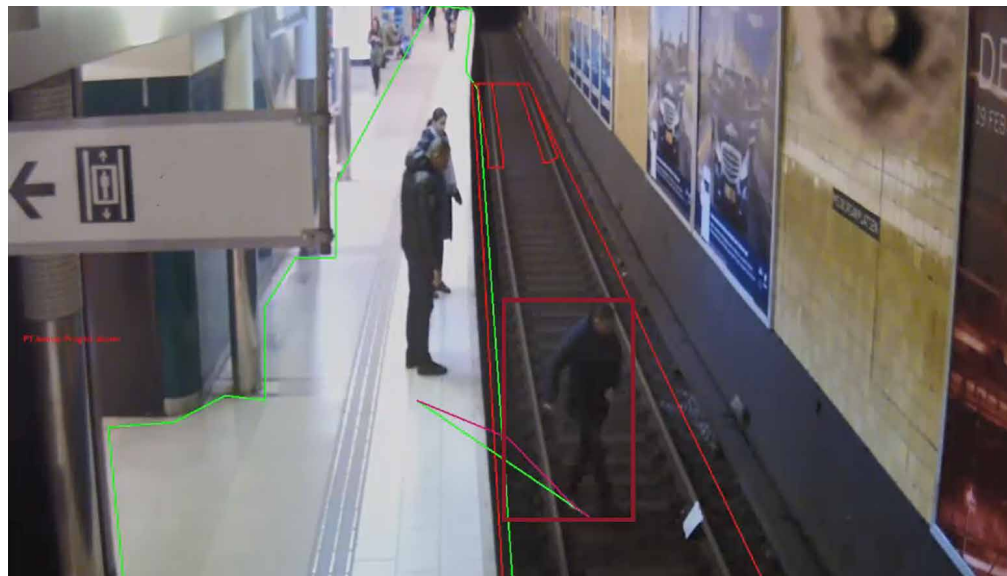


## IPS Public Transport Protection

IPS Public Transport Protection is an intelligent video analytics module for real-time alerting in case of potential emergencies in underground or overground railway installations. It recognises people and trains, determines the presence and behaviour of people on the platform and identifies exposed people in the track bed. This enables the reliable detection of dangerous situations even under difficult lighting and weather conditions. Installation and configuration is straightforward and it is suitable for indoor and outdoor applications.

### Key features

- Real-time alerting in case of people on the track bed
- Train recognition, object recognition and tracking as well as activity recognition
- Video analytics based on machine learning technology guarantees a low false alarm rate
- Configuration of capture, safety strip and track bed zone
- Setting of object sizes, perspectives and application variants
- Flexibly adjustable alarm criteria, trigger time and alarm intervals
- Suitable for colour cameras



### Your benefits

- Software based platform and track bed surveillance
- Facilitates suicide prevention and immediate intervention in case of potential emergencies
- Reliable detection even in highly frequented areas
- Damage minimization through early detection of suspicious behaviour and thus avoidance of incidents

## IPS Left Luggage Detection\*



IPS Left Luggage Detection is an intelligent video analytics module for real-time alerting in case of suspicious luggage in monitored indoor areas. It recognises abandoned cases or bags and verifies its dwell time. Additionally, it can be perfectly adjusted to its environment. This facilitates an exact detection of abandoned or potentially dangerous luggage even in highly frequented areas. Installation and configuration is straightforward and it is suitable for indoor applications.

### Key features

- Real-time alerting in case of suspicious luggage in monitored area
- Luggage recognition and activity recognition
- Video analytics based on machine learning technology guarantees a low false alarm rate
- Configuration of capture and alarm zone
- Setting of object sizes, object directions, object resting time, perspectives and application variants
- 3D georeferencing possible
- Suitable for colour cameras

\* Not available in Germany!

### Your benefits

- Protection against terrorist attacks and detection of lost luggage
- Facilitates immediate intervention in the event of potentially dangerous pieces of luggage
- Reliable detection even in highly frequented areas
- Intuitive installation and configuration





**EXTRA. SAFE.**



**Securiton Germany**

Alarm and Security Systems  
Headquarters: Von-Drais-Str. 33 | 77855 Achern | DE  
[www.ips.securiton.de](http://www.ips.securiton.de) | [info@securiton.de](mailto:info@securiton.de)

**A Company of the Swiss Securitas Group**

---